



**Powder Mills
Princetown
Devon PL20 6SP
Tel: +44 (0) 1822 880277
Fax: +44 (0) 1822 880392
Email:
martin@spirit-of-adventure.com**

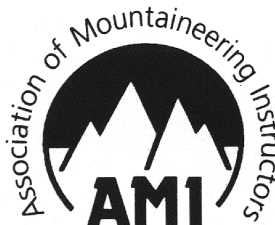
Trans Dartmoor 2011

This stunning walk takes you right across the heart of one of England's last true wildernesses

Dartmoor is the largest true wild area in the South of England and is generally considered a testing navigational challenge. The guided route for this trek will traverse the moor from south to north enjoying the very best of it's wild rugged landscape, passing many of Dartmoor's historical ancient sites dating from as far away as 4000BC.

Dartmoor is true wild country. Cut Hill, near Fur Tor, is the centre of the North Moor and is the furthest point from any road south of Northumberland. Unlike other wild areas of England, the Moors are not crowded and you will not see many people, if any, in the remoter parts even in mid summer.

There are very few paths and trails on the Moor and the conditions under foot can, at times, be quite hard going. The Moors may not be dramatic but they are mysterious and when the mist is down they test even the most experienced walker. These walks are not route marches, but we walk at a pace which enables you to enjoy the moor. You will be accompanied by a qualified instructor who will be happy to teach you some navigation skills or help you brush up any skills which may have dulled over the years. However you may just wish to come and savour the pleasure of being miles from the nearest road or habitation as you trek over this area of outstanding natural beauty. Buzzard, raven, badger and fox are just a few of the animal species that may well be seen.





2011 Trans Dartmoor

Programme

At about 09:00 on Saturday, we will head to the south-side of the moor near Ivybridge. Our route will take us to the centre of the south moor via an old industrial track. From there we will visit some of Dartmoor's past history, before traversing the moor and finish at Princetown.

On Sunday we will head for the north moor, this is wild and isolated. Our route takes through one of the most remote areas of Britain, finishing near Meldon. We will be picked up by mini bus and brought back to our base in Postbridge.

All you need to carry is your day rucksack, packed lunch, waterproofs, etc. We will be walking for between 6 and 7 hours each day. You will be accompanied by a fully qualified instructor during the walks.

This trip will be led by either John or Steve. John is a member of the Association of Mountain Instructors and holds the Mountain Instructors Award. Steve is a qualified International Mountain Leader. Both John and Steve have a passion for Dartmoor and can share many a tale of the myths and legends abound about the moor. They also have a keen interest in Dartmoor's unique environment and will be only too pleased to point out animals and birds that run or take flight whilst on your walk.





Dartmoor Trek 2011 Trans Dartmoor

Suggested Kit List

We will provide the following:

All specialist activity equipment

You will need to provide the following:

Lunch box

Full waterproofs

Small day rucksack

Warm hat / Sun hat

Warm jumper or fleece jacket

Suitable walking trousers / shorts

Walking shoes or boots

Long sleeve shirt / T-shirts

Socks

Sun protection cream

Torch and spare batteries / bulb

Small first aid kit

Insect repellent

Wash kit / Towel

Camera

Personal First Aid kit

Insect repellent

Water bottle / thermos

Fact and Figures
2011

Trans-Dartmoor
**Self-catering, or B/B
accommodation can be
organised for you.**

Dates and Prices

Ref. No.	Dates
TDE111	7 - 8 May
TDE112	10 - 11 Sept

Experience Required

Regular walker

2011 Costs

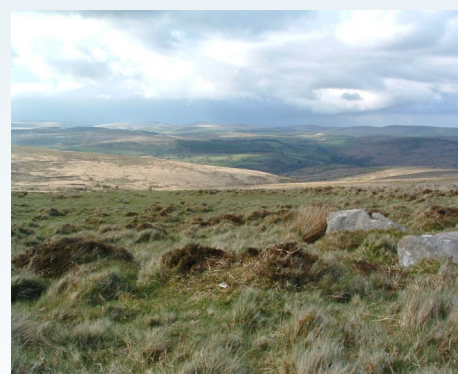
Adults £105

Experience Required

None

Guaranteed to run with 4
people

**Instructor: Trainee
ratio 1:8**



www.spirit-of-adventure.com

